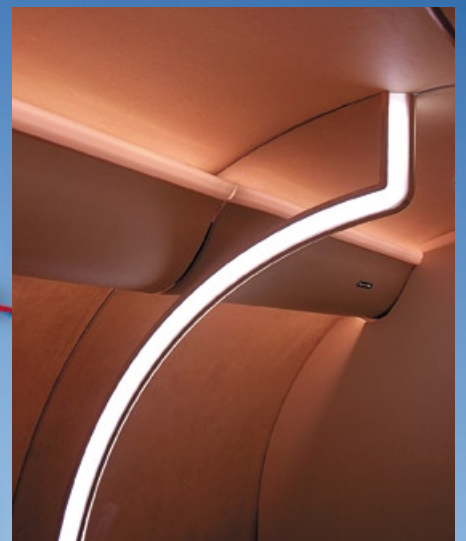
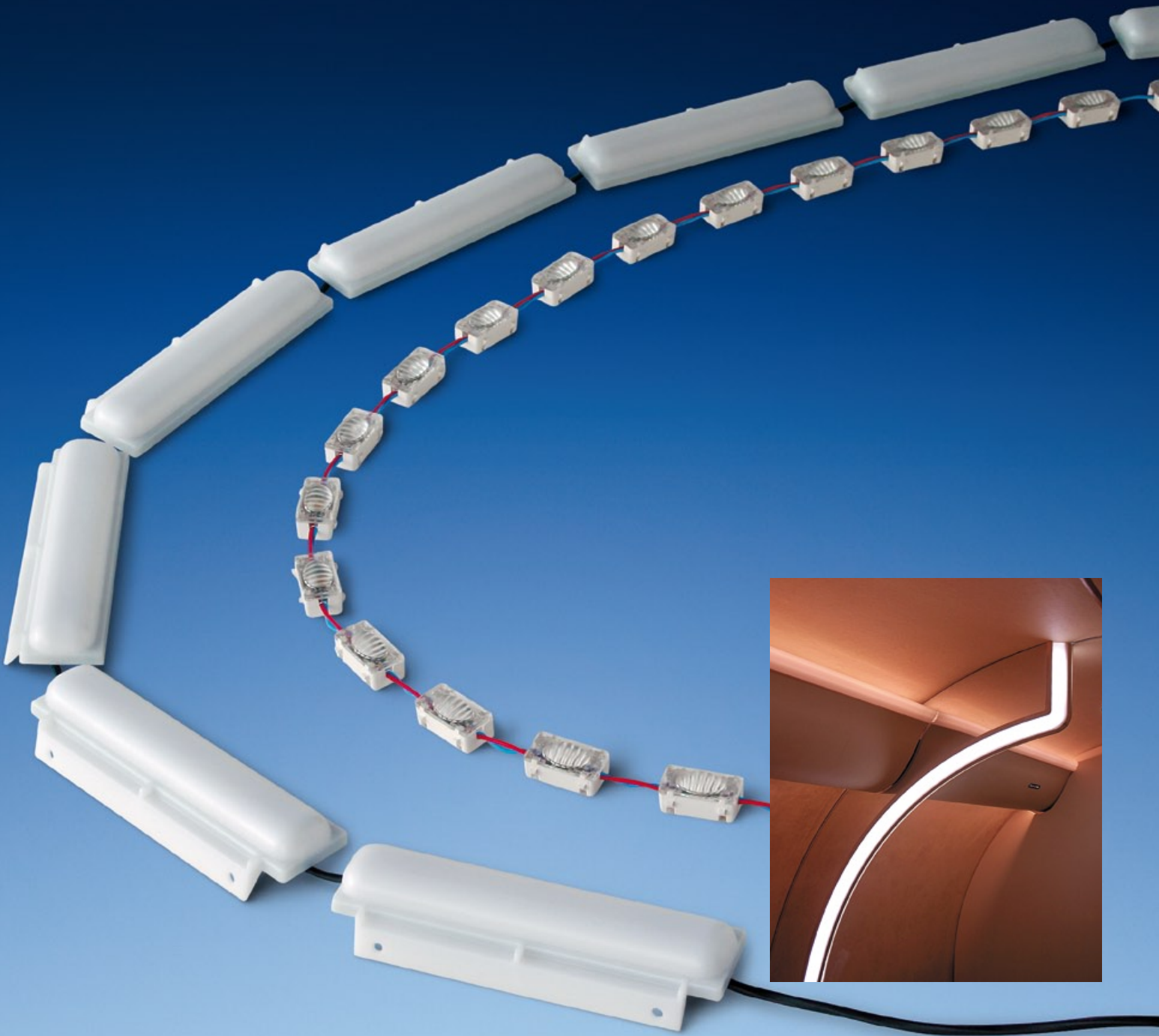


FLEXIBLE LED LIGHTS



right attitude/right approach/right alongside  
[www.goodrich.com](http://www.goodrich.com)

**GOODRICH**

# FLEXIBLE LED LIGHTS

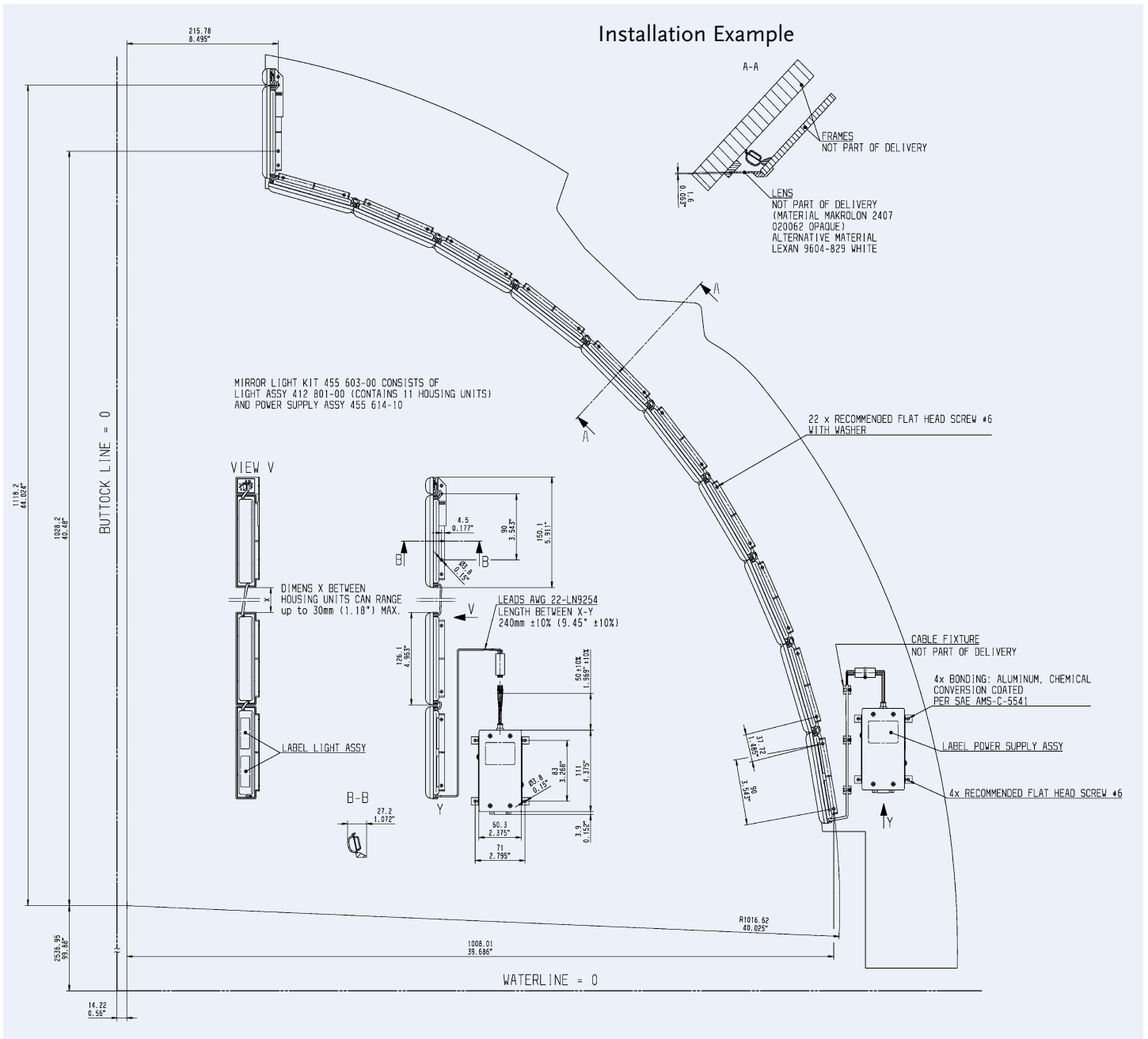


## MIRROR LIGHT 2LA 455 603-00

This light assembly consists of a power supply and 11 lighted parts. These parts can follow a special contour (of a mirror for example).

### Technical Data:

- Operating voltage: 28 V DC
- Operating current: 1.8 A ± 10%
- Light source: white LEDs
- Weight: 0.689 kg (1.540 lbs) max.



- Standard operation: 28 V DC
- Option: control via CAN-bus for On/Off and dimming

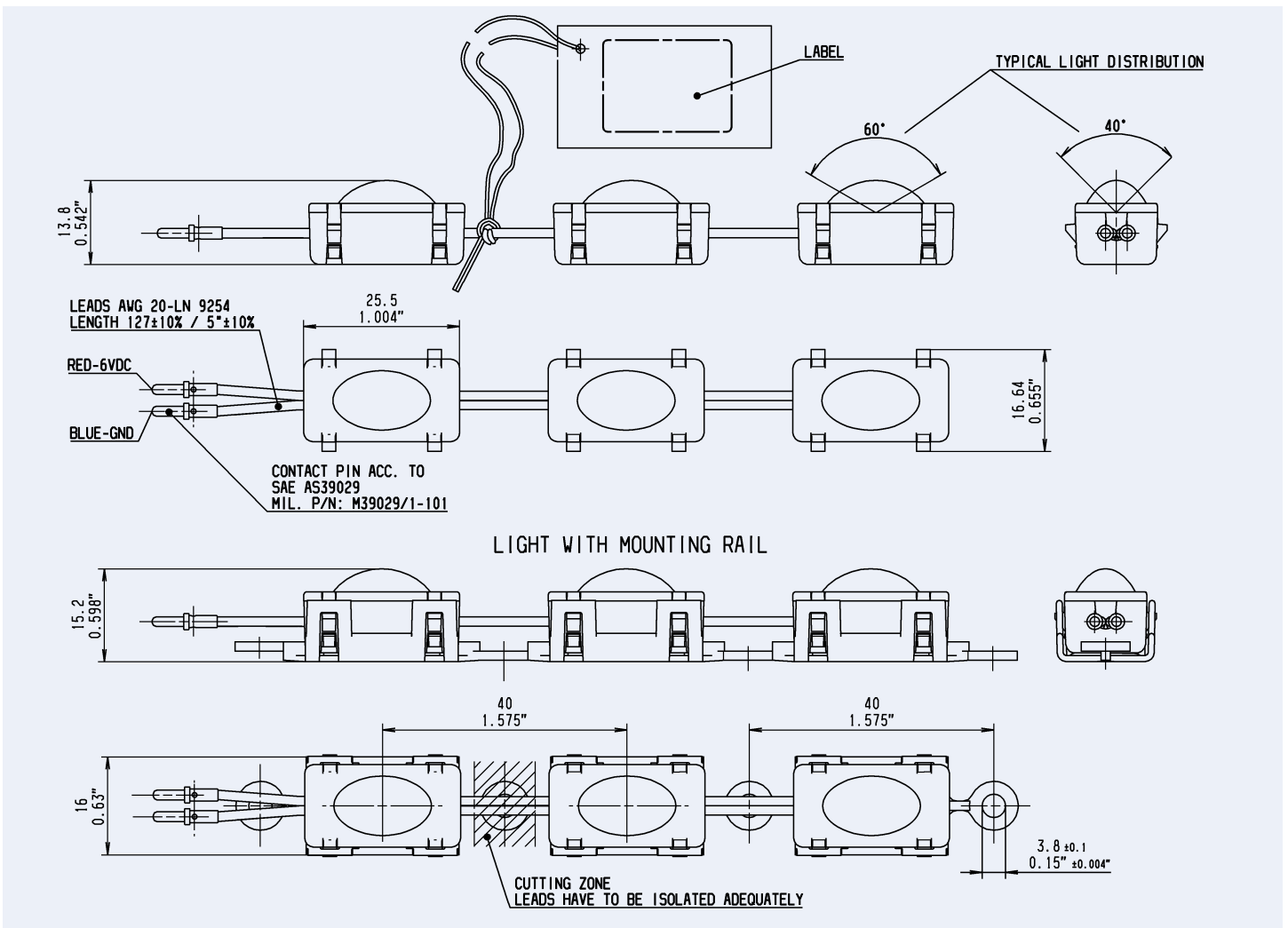


## ACCENT LIGHT 2LA 455 555-..

This light assembly consists of a great number of small lighted parts and can therefore easily follow a special contour. It is mainly used to illuminate pedestal areas.

### Technical Data:

- Operating voltage: see table
- Operating current: see table
- Light source: white LEDs



Partnumber	Length of Lights	Modules	Oper. Voltage	Oper. Current	Mounting Rail	Total Weight
2LA 455 555-00	3040 mm / 120"	76	6 V DC *	912 mA ± 25%	10 x 412 324-00	0.500 kg (1.10 lbs) max.
2LA 455 555-10	1520 mm / 60"	38	6 V DC *	456 mA ± 25%	5 x 412 324-00	0.250 kg (0.55 lbs) max.
2LA 455 555-20	760 mm / 30"	19	6 V DC *	228 mA ± 25%	3 x 412 324-00	0.125 kg (0.28 lbs) max.
2LA 455 555-50	3040 mm / 120"	76	28 V DC	456 mA ± 10%	10 x 412 324-00	0.500 kg (1.10 lbs) max.
2LA 455 555-60	1520 mm / 60"	38	28 V DC	228 mA ± 10%	5 x 412 324-00	0.250 kg (0.55 lbs) max.
2LA 455 555-70	760 mm / 30"	19	28 V DC	114 mA ± 10%	3 x 412 324-00	0.125 kg (0.28 lbs) max.

\* This accent light can be operated with 6 V DC or with the Power supply 5XA 455 614-00 with following advantage:

• Control via CAN-bus for On/Off and dimming

# FLEXIBLE LED LIGHTS CONT.

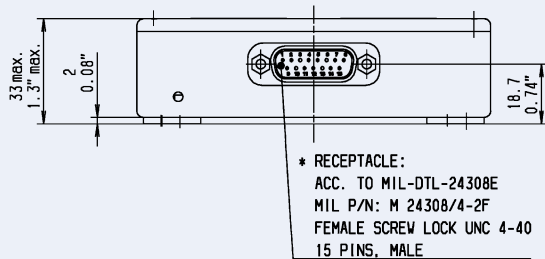


## POWER SUPPLY 5XA 455 614-00 (REQUIRED FOR CONTROLLING 2LA 455 555-..)

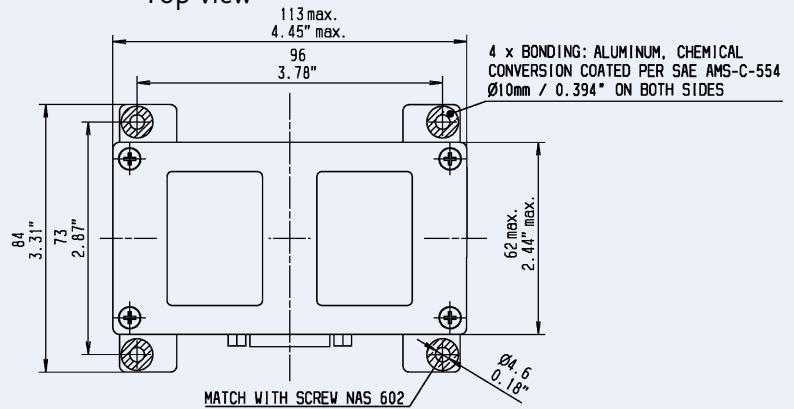
### Technical Data:

- Operating voltage: 28 V DC
- Operating current: 560 mA  $\pm$  15%
- No load current: 30 mA  $\pm$  50%
- Output voltage: 6 V max.
- Output current: 2 A max. ( $\approx$  6.6 m 2LA 455 555-..)
- Weight: 0.4 kg (0.882 lbs) max.

Front view



Top view



### Goodrich Lighting Systems GmbH

Bertramstrasse 8  
59557 Lippstadt/Germany  
Tel.: +49 2941 7676-0  
Fax: +49 2941 7676-8432  
Sita: PADHECR

### Goodrich Lighting Systems, Inc.

129 Fairfield Street  
Oldsmar, FL 34677  
Tel.: +1 813 891-7100  
Fax: +1 813 855-5572  
Sita: TOAHAXD

<http://www.lighting.goodrich.com>  
[lighting@goodrich.com](mailto:lighting@goodrich.com)